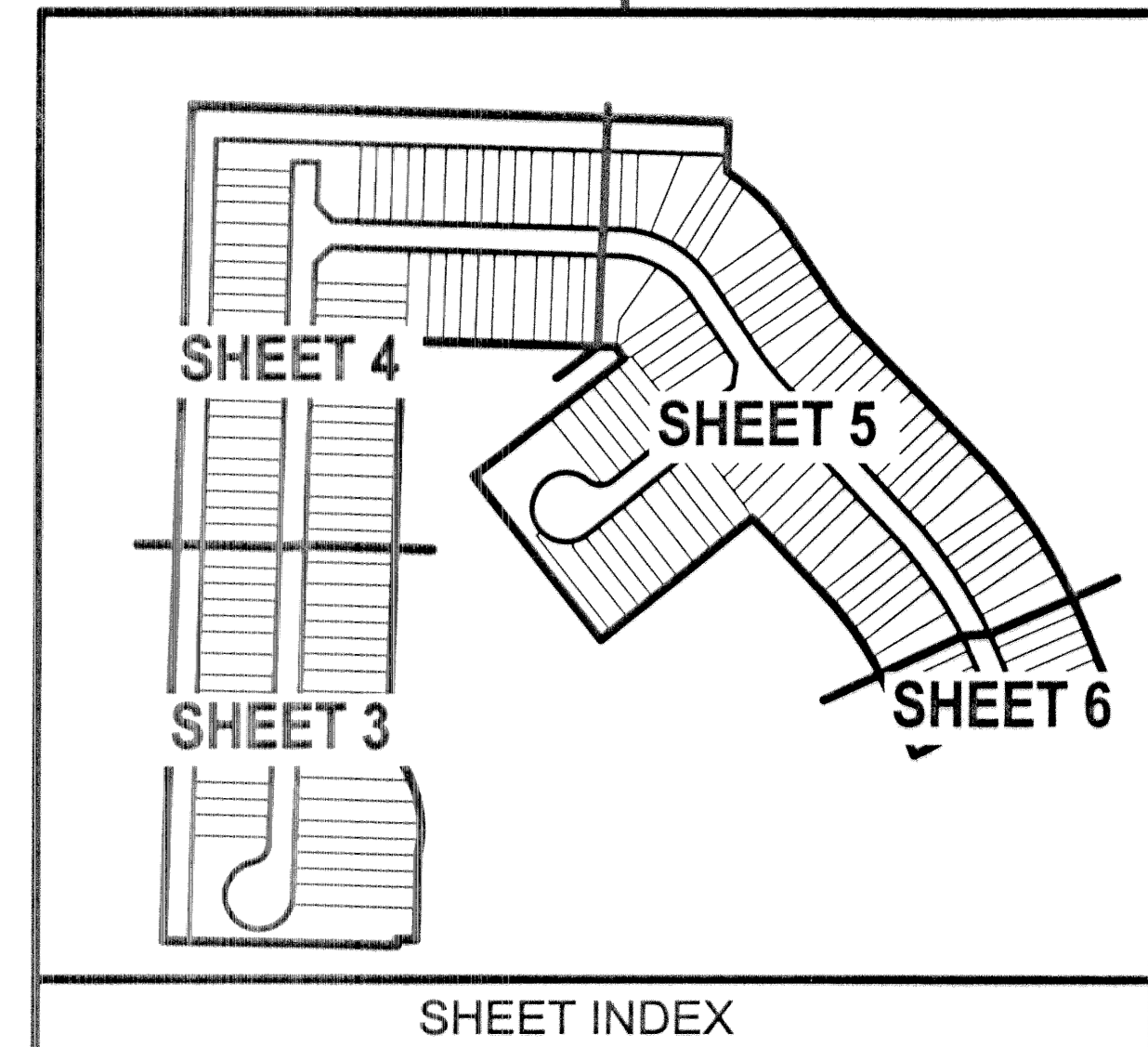
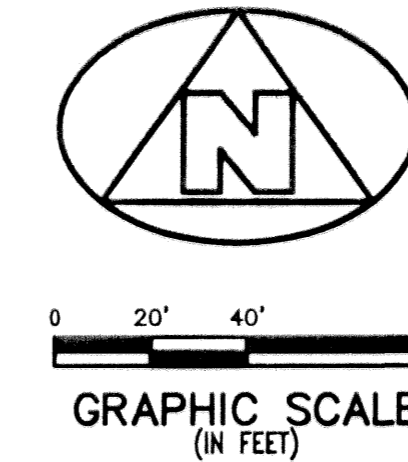


# BAYWINDS POD "H"

(A PART OF BAYWINDS RESIDENTIAL PLANNED DEVELOPMENT)

LYING IN SECTION 19, TOWNSHIP 43 SOUTH, RANGE 42 EAST, CITY OF WEST PALM BEACH, PALM BEACH COUNTY, FLORIDA

SHEET 4 OF 6  
MATCH LINE



SHEET INDEX

### LEGEND:

- (R) DENOTES A RADIAL LINE
- C/L DENOTES A CENTERLINE
- R DENOTES RADIUS DISTANCE
- L DENOTES ARC LENGTH DISTANCE
- CA DENOTES CENTRAL ANGLE
- CA L.M.E. DENOTES A LAKE MAINTENANCE EASEMENT
- U.E. DENOTES A UTILITY EASEMENT
- D.E. DENOTES A DRAINAGE EASEMENT
- ☐ DENOTES A SET PERMANENT REFERENCE MONUMENT (NO. 2171)
- DENOTES A FOUND PERMANENT REFERENCE MONUMENT (NO. 4396)
- ⊙ DENOTES A SET PERMANENT CONTROL POINT (NO. 2171)

### SURVEYOR'S NOTES AND LEGEND:

1. THE BASE BEARING, AS SHOWN HEREON, IS N01°45'20"E ALONG THE WEST LINE OF SECTION 19, TOWNSHIP 43 SOUTH, RANGE 42 EAST, PALM BEACH COUNTY, FLORIDA
2. IN THOSE INSTANCES WHERE UTILITY/DRAINAGE STRUCTURES ARE CONSTRUCTED IN CONFLICT WITH THE PLATTED PERMANENT CONTROL POINTS (P.C.P.) POSITION, STRADDLERS MONUMENTED AS PERMANENT CONTROL POINTS WILL BE SET TO REFERENCE THE PLATTED P.C.P. POSITION.
3. LINES WHICH INTERSECT CURVES ARE NOT RADIAL, UNLESS OTHERWISE NOTED.

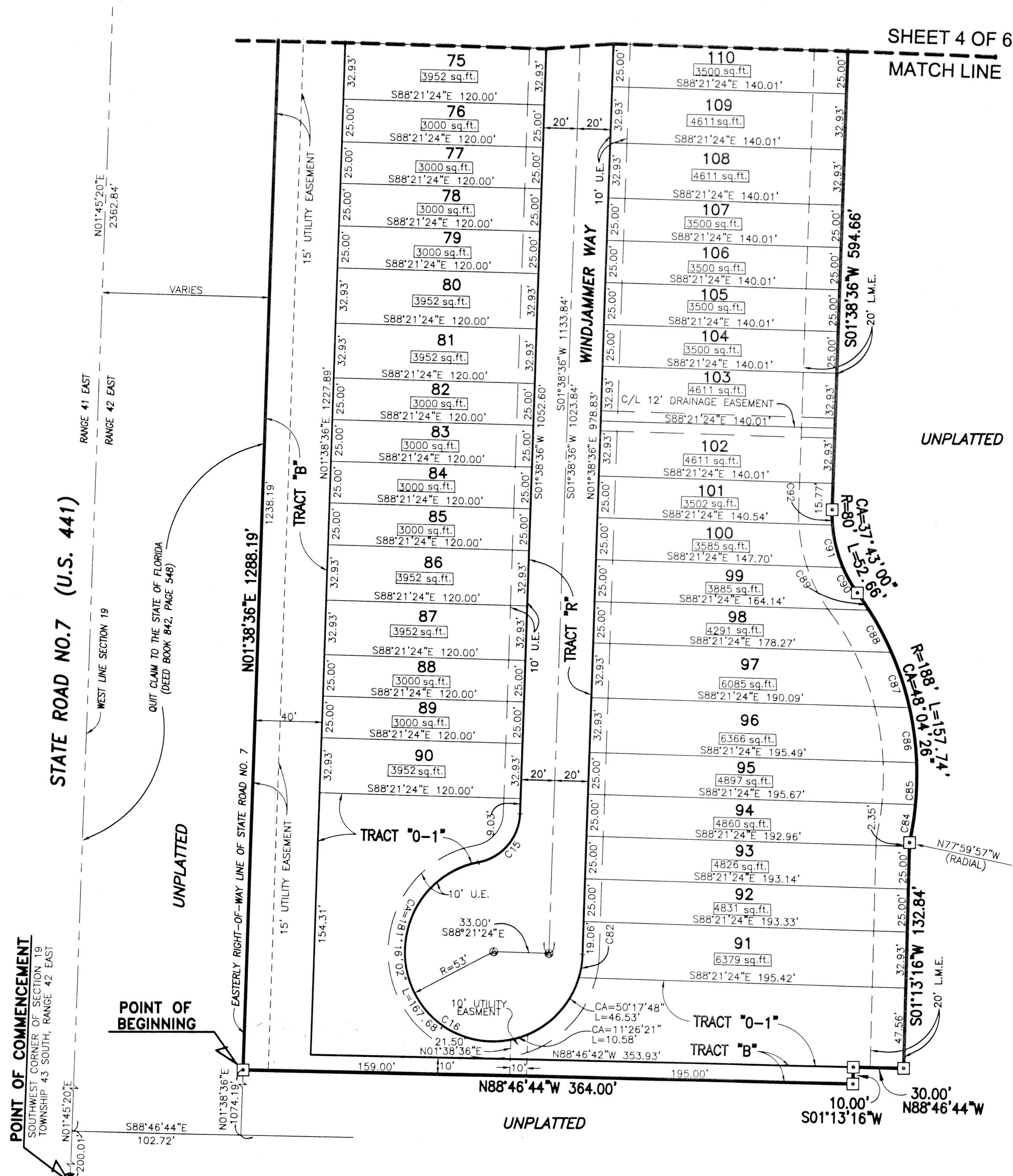
THIS INSTRUMENT WAS PREPARED BY WM. R. VAN CAMPEN, R.L.S., IN AND FOR THE OFFICES OF BENCH MARK LAND SURVEYING & MAPPING, INC., 4152 WEST BLUE HERON BOULEVARD, SUITE 121, RIVIERA BEACH, FLORIDA

**BENCH MARK LAND SURVEYING & MAPPING, INC.**  
 4152 W. BLUE HERON BOULEVARD - SUITE 121  
 RIVIERA BEACH - FLORIDA 33404  
 PHONE: (561) 848-2102 • LB. 2171 • FAX: (561) 844-9659  
 EMAIL: bmlsm@aol.com WEB: http://members.aol.com/bmlsm

RECORD PLAT  
BAYWINDS POD "H"

DWN	FB	DATE 9-17-01	WO.# P147H
CKD	FILE P147HPLAT	SCALE 1"=40'	SHEET 3 OF 6

C1	R=700'	CA=21°38'46"	L=264.46'	LCB=S33°18'11"E	CHD=262.89'		
C2	R=536.46'	CA=09°46'53"	L=91.58'	LCB=S39°14'08"E	CHD=91.47'		
C3	R=536.46'	CA=04°53'17"	L=45.77'	LCB=S41°40'55"E	CHD=45.75'		
C4	R=536.46'	CA=04°53'36"	L=45.82'	LCB=S36°51'07"E	CHD=45.80'		
C5	R=160'	CA=54°00'20"	L=150.81'	LCB=S61°20'51"E	CHD=145.29'		
C6	R=720'	CA=21°38'46"	L=272.01'	C51	R=860'	CA=01°39'57"	L=25.00'
C7	R=680'	CA=21°38'46"	L=256.90'	C52	R=860'	CA=01°40'01"	L=25.02'
C8	R=516.46'	CA=09°46'53"	L=88.17'	C53	R=860'	CA=02°57'46"	L=44.47'
C9	R=556.46'	CA=00°16'59"	L=2.75'	C54	R=860'	CA=02°52'46"	L=43.22'
C10	R=556.46'	CA=00°13'51"	L=2.24'	C55	R=860'	CA=01°39'58"	L=25.01'
C11	R=30'	CA=78°10'52"	L=40.94'	C56	R=860'	CA=01°12'28"	L=18.13'
C12	R=53'	CA=258°10'52"	L=238.82'	C57	R=516.46'	CA=00°22'59"	L=3.45'
C13	R=180'	CA=54°00'20"	L=169.66'	C58	R=516.46'	CA=04°35'14"	L=41.35'
C14	R=140'	CA=54°00'20"	L=131.96'	C59	R=516.46'	CA=04°33'30"	L=41.09'
C15	R=30'	CA=78°10'52"	L=40.94'	C60	R=516.46'	CA=00°15'10"	L=2.28'
C16	R=53'	CA=258°10'52"	L=238.82'	C61	R=376.46'	CA=00°31'33"	L=3.45'
C17	R=540'	CA=02°29'51"	L=23.54'	C62	R=376.46'	CA=04°26'40"	L=29.20'
C18	R=540'	CA=02°39'16"	L=25.02'	C63	R=376.46'	CA=04°27'52"	L=29.38'
C19	R=540'	CA=02°39'11"	L=25.00'	C64	R=376.46'	CA=00°20'48"	L=2.28'
C20	R=540'	CA=02°39'26"	L=25.04'	C65	R=53'	CA=05°01'55"	L=4.65'
C21	R=540'	CA=02°55'57"	L=27.64'	C66	R=53'	CA=23°02'28"	L=21.31'
C22	R=540'	CA=02°59'09"	L=28.14'	C67	R=53'	CA=56°31'05"	L=52.28'
C23	R=540'	CA=02°39'14"	L=25.01'	C68	R=53'	CA=168°11'05"	L=155.57'
C24	R=680'	CA=02°36'44"	L=24.62'	C69	R=30'	CA=48°09'54"	L=25.22'
C25	R=680'	CA=00°26'47"	L=5.30'	C70	R=30'	CA=30°00'57"	L=15.72'
C26	R=680'	CA=02°06'24"	L=25.00'	C71	R=180'	CA=07°16'15"	L=22.84'
C27	R=680'	CA=02°06'26"	L=25.01'	C72	R=180'	CA=11°12'08"	L=35.19'
C28	R=680'	CA=03°37'27"	L=43.01'	C73	R=180'	CA=07°57'52"	L=25.02'
C29	R=680'	CA=03°50'52"	L=45.67'	C74	R=180'	CA=08°02'05"	L=25.24'
C30	R=680'	CA=02°06'32"	L=25.03'	C75	R=180'	CA=10°33'11"	L=33.15'
C31	R=680'	CA=02°06'24"	L=25.00'	C76	R=180'	CA=01°19'01"	L=4.14'
C32	R=680'	CA=02°06'27"	L=25.01'	C77	R=320'	CA=06°07'41"	L=34.22'
C33	R=680'	CA=02°06'40"	L=25.05'	C78	R=320'	CA=10°51'07"	L=60.61'
C34	R=680'	CA=01°04'48"	L=12.82'	C79	R=320'	CA=04°29'23"	L=25.08'
C35	R=720'	CA=01°18'48"	L=16.50'	C80	R=320'	CA=01°46'57"	L=9.95'
C36	R=720'	CA=01°59'25"	L=25.01'	C81	R=320'	CA=15°10'41"	L=14.04'
C37	R=720'	CA=02°26'58"	L=30.78'	C82	R=188'	CA=06°57'29"	L=22.83'
C38	R=720'	CA=02°22'19"	L=29.81'	C83	R=188'	CA=07°37'30"	L=25.02'
C39	R=720'	CA=01°59'30"	L=25.03'	C84	R=188'	CA=18°43'27"	L=26.12'
C40	R=720'	CA=00°24'41"	L=5.17'	C85	R=188'	CA=10°40'47"	L=35.04'
C41	R=720'	CA=01°59'24"	L=25.01'	C86	R=188'	CA=08°45'36"	L=28.74'
C42	R=720'	CA=01°59'35"	L=25.04'	C87	R=188'	CA=03°51'60"	L=12.69'
C43	R=720'	CA=02°36'48"	L=32.84'	C88	R=80'	CA=12°23'00"	L=17.29'
C44	R=720'	CA=02°31'55"	L=31.82'	C89	R=80'	CA=18°43'27"	L=26.12'
C45	R=720'	CA=00°24'41"	L=5.17'	C90	R=80'	CA=06°35'43"	L=9.25'
C46	R=860'	CA=00°20'40"	L=5.17'	C91	R=80'	CA=25°38'44"	L=62.66'
C47	R=860'	CA=02°40'36"	L=40.18'	C92	R=140'	CA=28°21'36"	L=69.30'
C48	R=860'	CA=03°14'35"	L=48.68'	C93			
C49	R=860'	CA=01°40'03"	L=25.03'	C94			
C50	R=860'	CA=01°39'57"	L=25.01'				



POINT OF COMMENCEMENT  
SOUTHWEST CORNER OF SECTION 19  
TOWNSHIP 43 SOUTH, RANGE 42 EAST

STATE ROAD NO.7 (U.S. 441)

POINT OF BEGINNING

UNPLATTED

UNPLATTED

TRU APR 04 2002 03:59 P. KYC